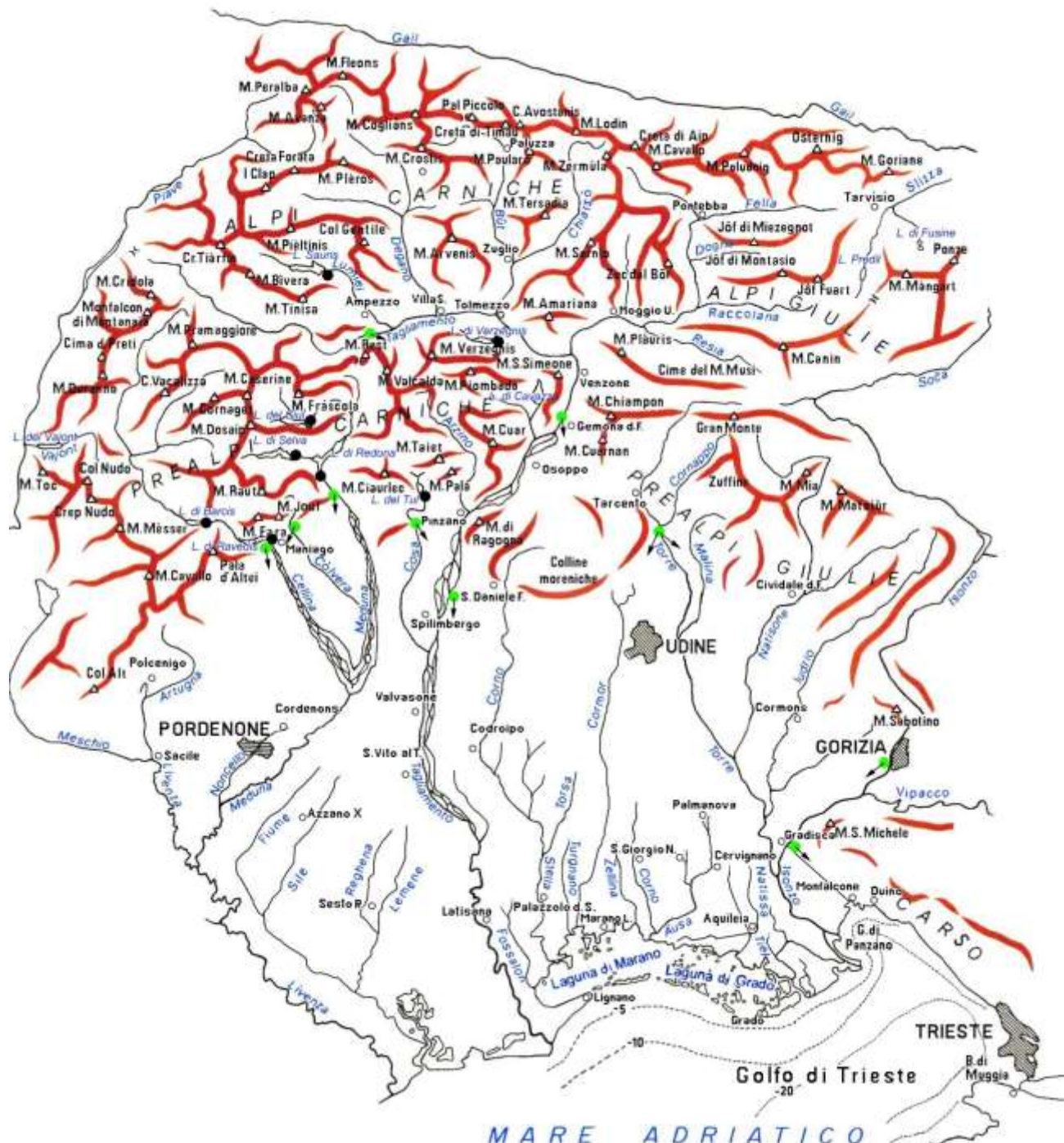


Visita del Collegio degli Ingegneri di Venezia

Dalla Val Tramontina a Torviscosa



Ing. Tito Pasqualis



MARE ADRIATICO

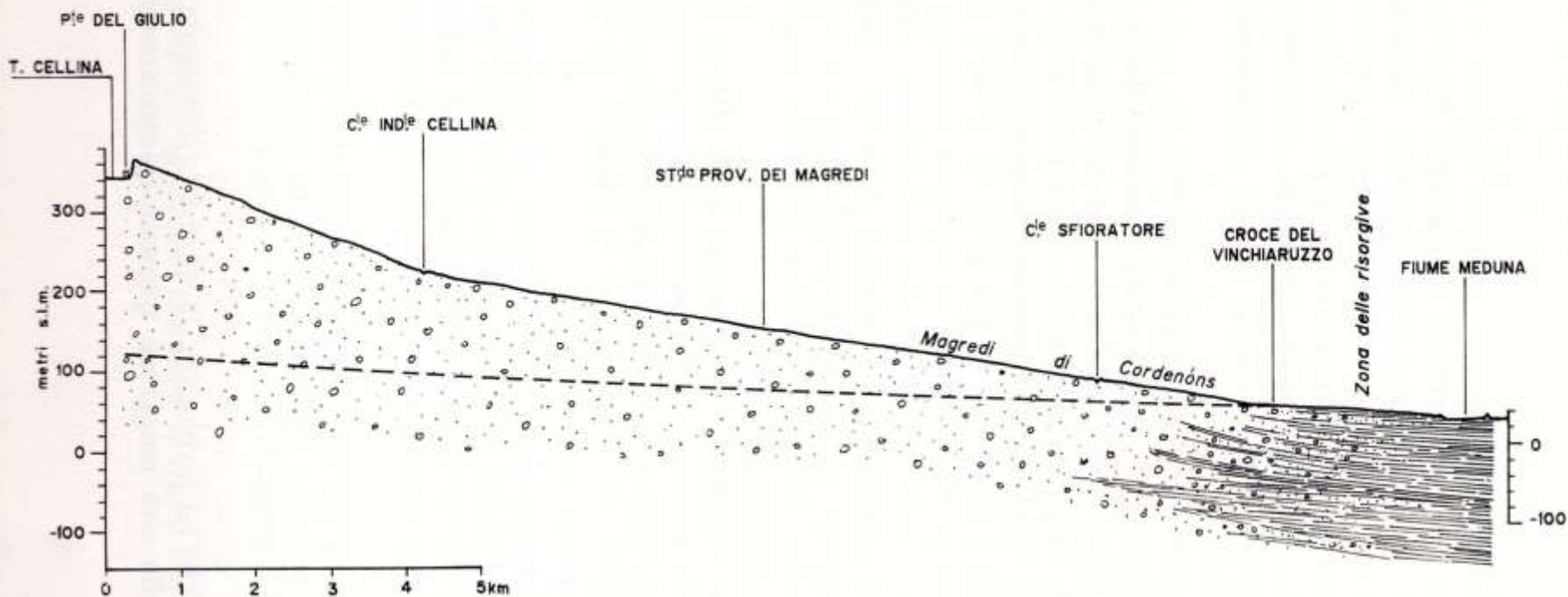






N

S

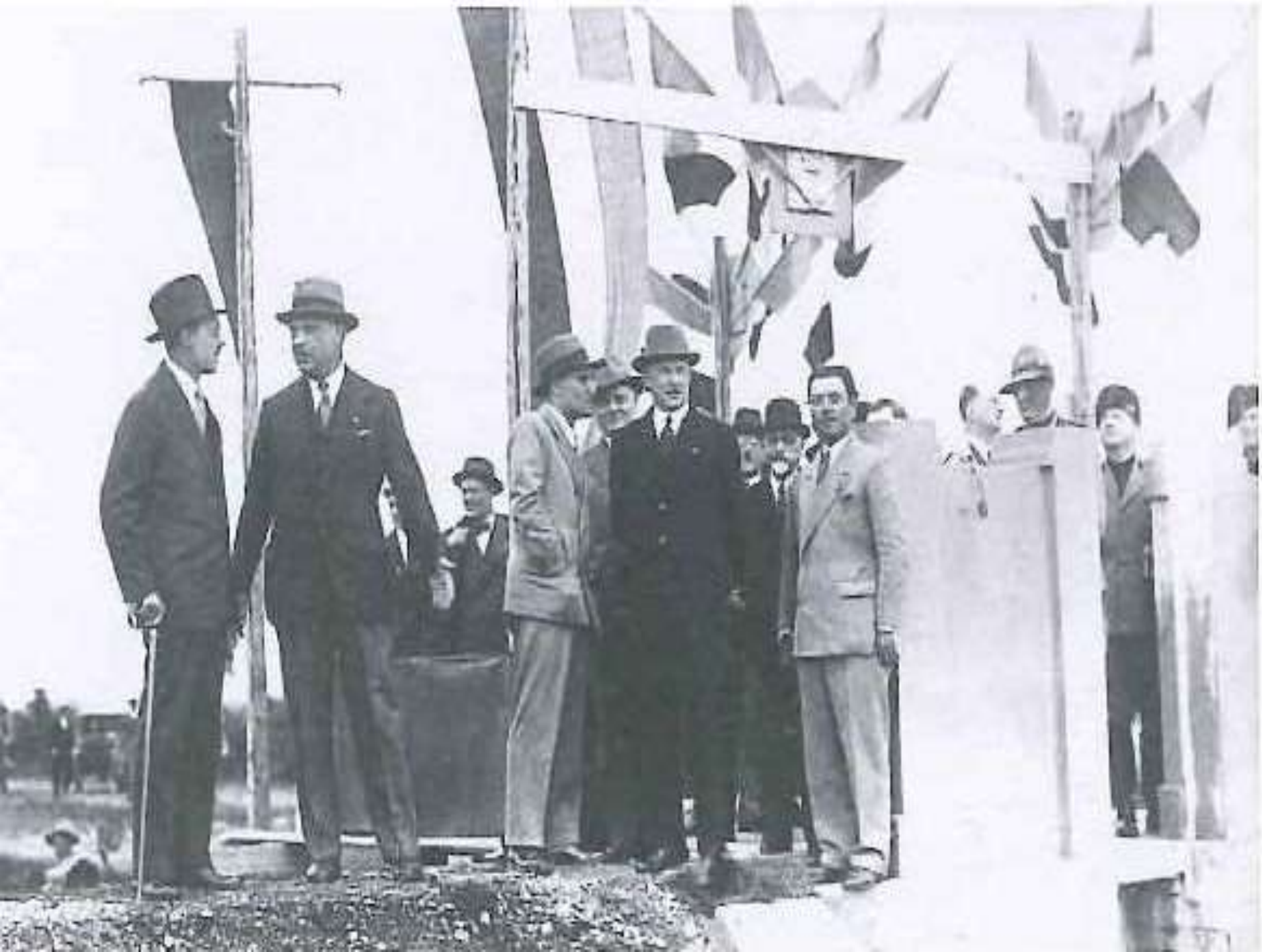


Sezione longitudinale dell'alta pianura (conoide del Cellina), fino alla zona delle risorgive, con l'indicazione schematica della struttura del sottosuolo costituito da elementi grossolani nella parte superiore e sottili in quella inferiore. La linea tratteggiata segna il livello medio della superficie libera della falda acquifera.





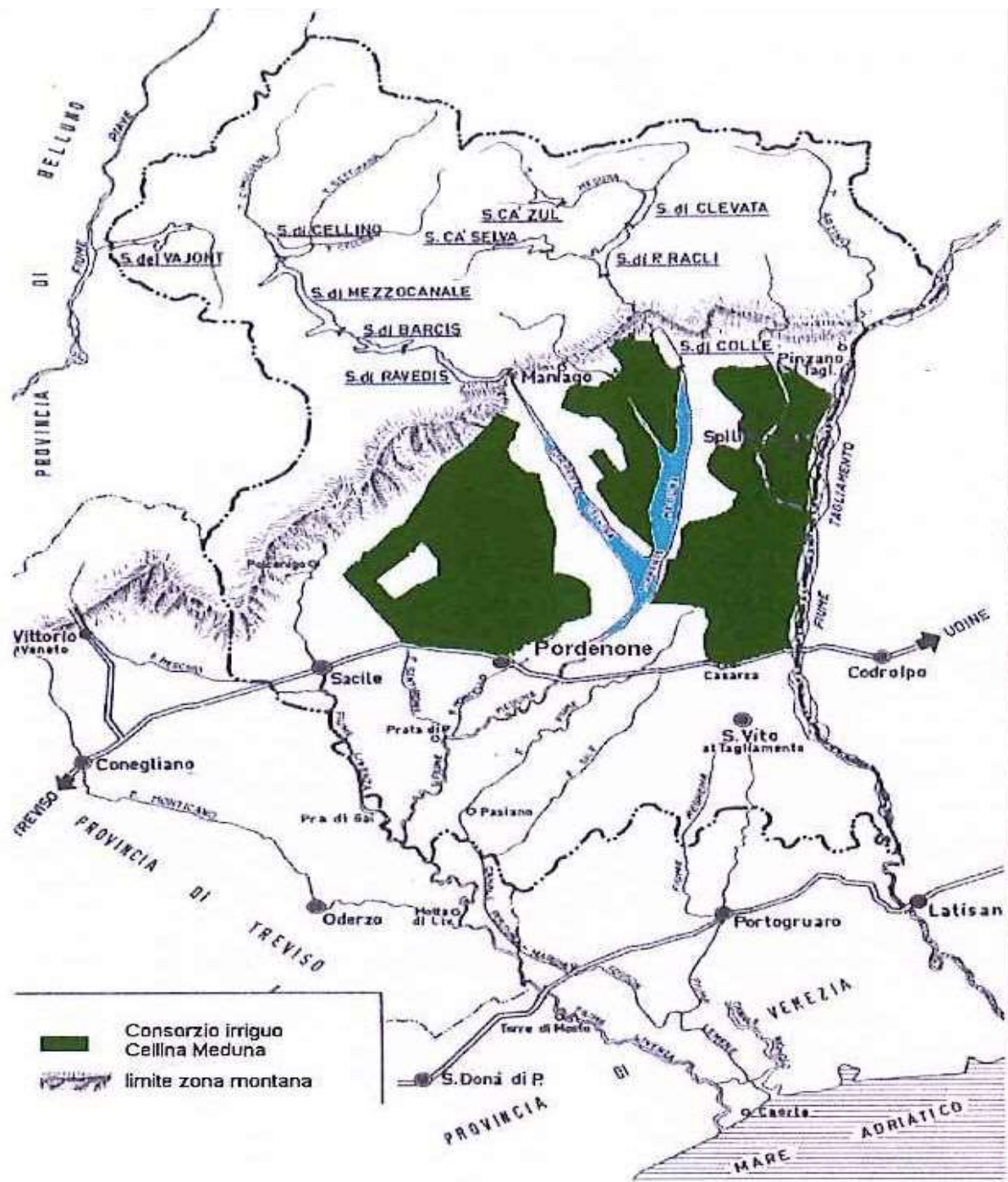










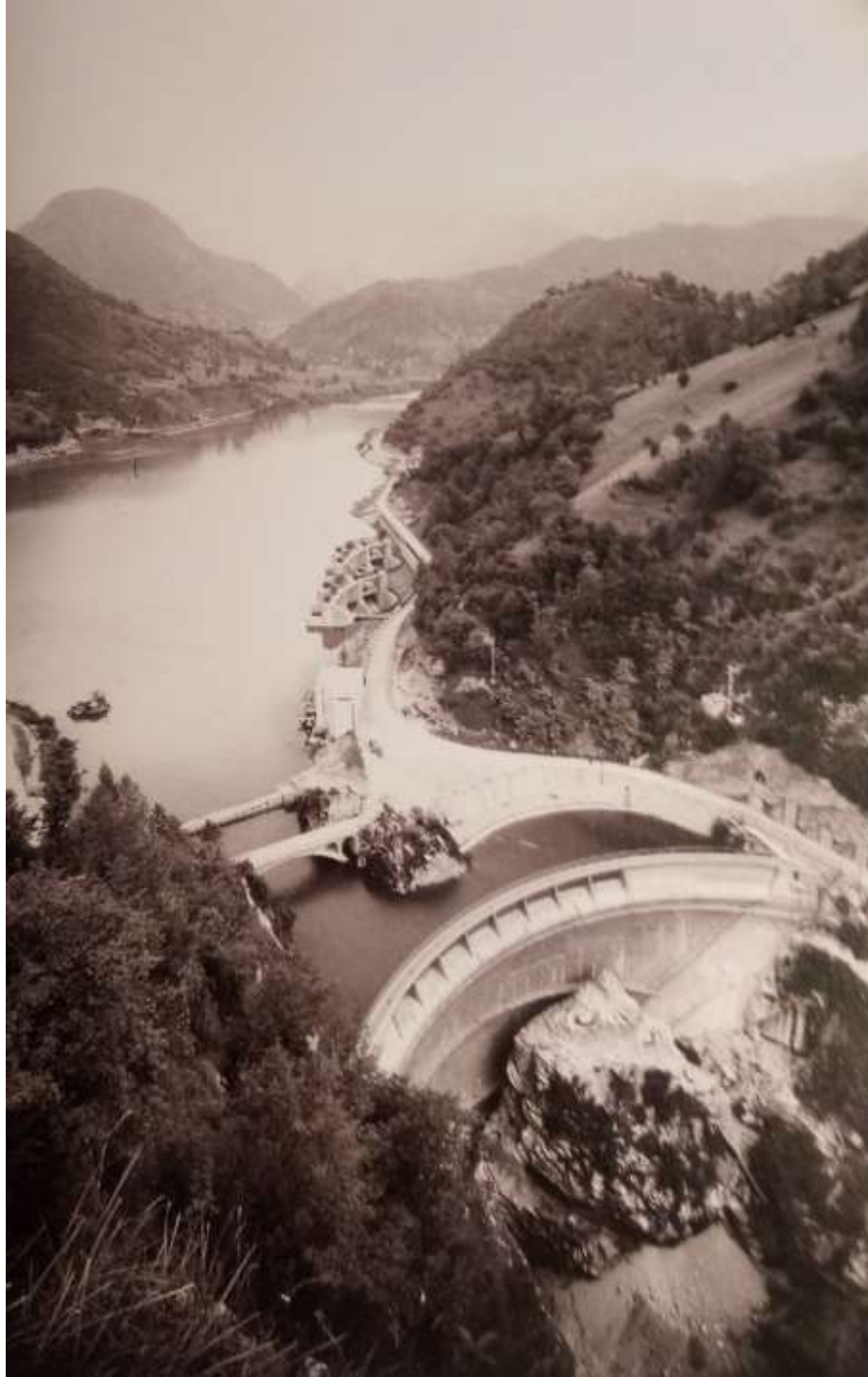




 Consorzio irriguo Cellina Meduna
 limite zona montana









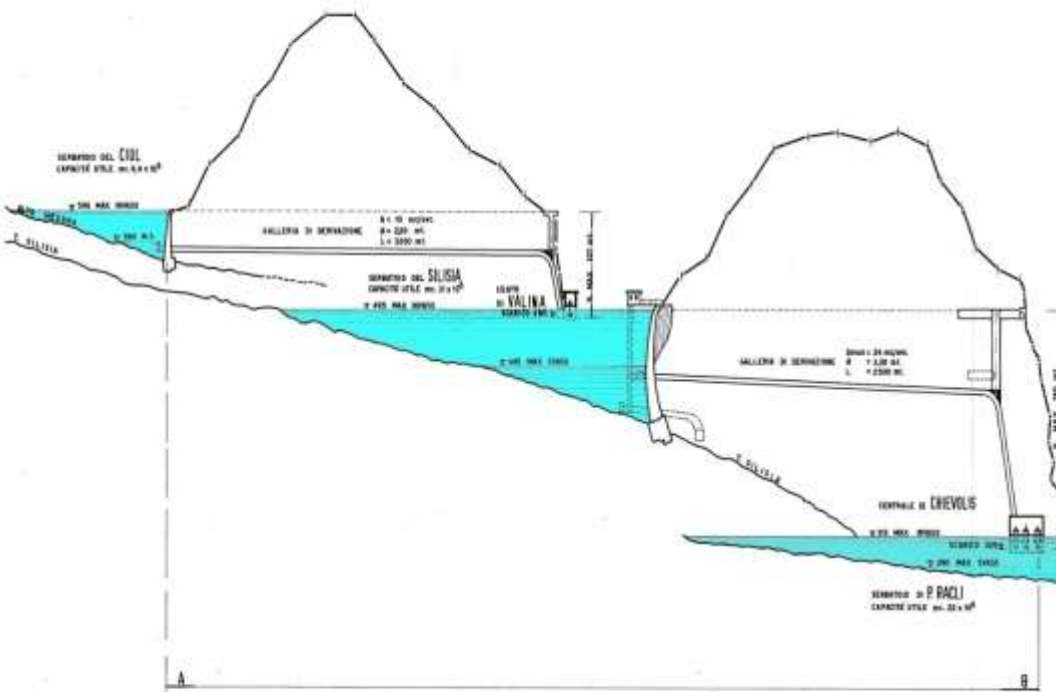












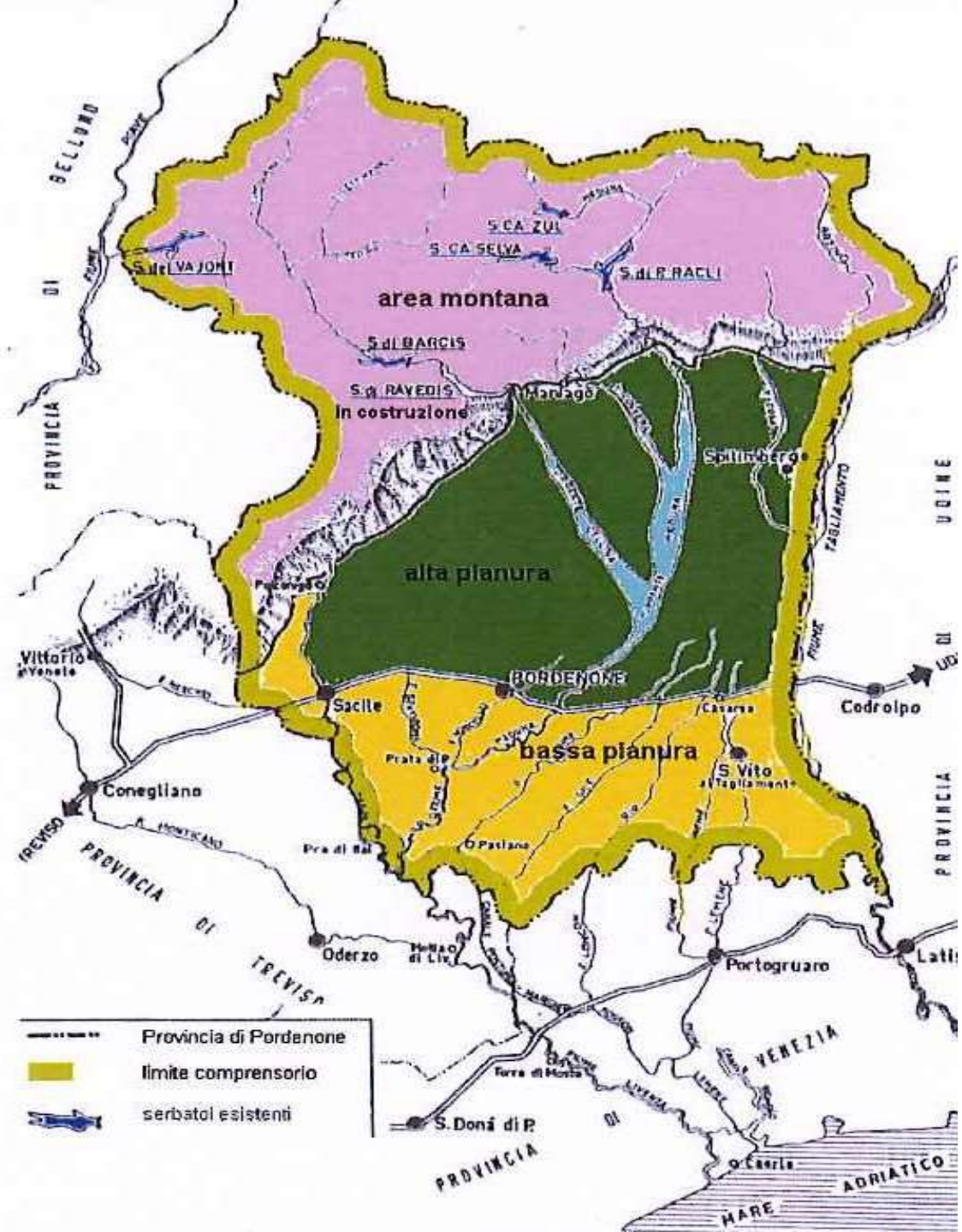
	POTENZE INSTALLATE IN KW	ENERGIA PRODUCIBILE KW h a TP
1 CENTRALE DI VALINA	12.000	18
2 " " CHIEVOLIS	2x11.000	67
3 " " MEDUNO	9.200	55
4 " " COLLE	2.300	24
5 " " ISTRAGO	7.200	44
TOTALE		208














-  Provincia di Pordenone
-  limite comprensorio
-  serbatoi esistenti









